

MODEL 63200E SERIES

KEY FEATURES

- Rated power: 2kW, 3kW, 4kW, 5kW, 6kW, 8kW, 10kW, 12kW, 15kW, 18kW, 20kW, 24kW
- Voltage range: 150V, 600V, 1200V
- Current range: 2000A max.
- CC, CR, CV & CP operation modes
- Up to 10 units master/slave parallel control
- Synchronous control in static and dynamic loads
- CZ mode for turn on capacitive load simulation
- Real time power supply load transient response simulation & Vpk+/- measurement
- User programmable 255 sequential front panel input status
- Ultra-precision voltage & current measurement
- Timing & discharging measurement for batteries
- Short circuit simulation
- Smart fan control
- Full protection: OC (adjustable), OT, OP (adjustable) protection & OV warning, polarity reverse alarm
- Standard USB, optional Ethernet/LXI and GPIB interfaces



High Accuracy



High Power Density



Battery Discharge

PROGRAMMABLE DC ELECTRONIC LOAD MODEL 63200E SERIES

The 63200E series are high power DC loads that include a choice of three operating voltages, 150V, 600V and 1,200V, with power levels from 2kW to 24kW and up to 2,000A in a single unit. Power levels can increase up to 240kW when multiple units are paralleled. These high power loads are designed for testing a wide range of EV products including DC charging stations, car battery discharge, on board charger power components, and other power electronics components. With its high power capabilities, parallel control and dynamic synchronization functions make this load ideal for automotive batteries, fuel cells and more.

The 63200E load's master/slave control application enables units with the same voltage specification to be used in parallel and synchronized dynamically to meet the power testing requirements. In addition, a 255-set data storage function has been built-in for recall of the stored settings at any time. When used in automated testing, the save and recall functions can save a great deal of time.

Each model of the 63200E series has precision and real time voltage and current measurements. As short circuit testing is critical to power and automated testing, the 63200E includes short circuit simulation to effectively solve these application demands.

With the organic light-emitting diode display (OLED) and rotary knob, the 63200E series loads offer versatile front panel operation. For remote operation, users are able to control the 63200E via standard USB or optional Ethernet/LXI and GPIB interfaces.

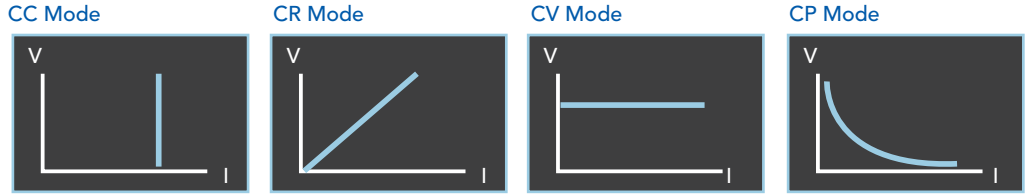
The embedded PWM fan speed control reduces noise caused by fans. The 63200E series also has overcurrent, overpower, and over temperature protections as well as over voltage and polarity reverse alarms to improve product reliability. These DC loads are reliable, precision instruments ideal design validation testing and automated test system integration.



Chroma
Advancing Excellence

APPLICATION OF BASIC LOADS

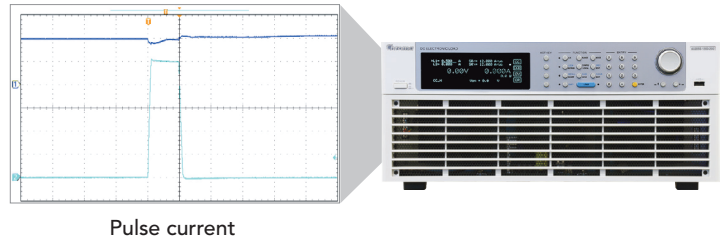
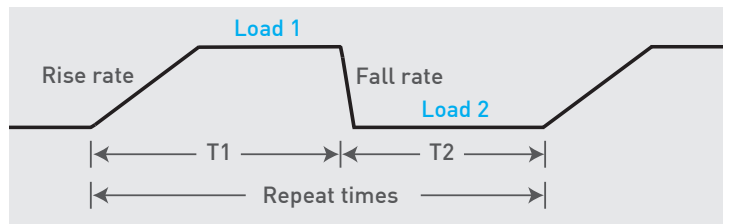
The 63200E series electronic loads operate in constant voltage, current, resistance, and power or impedance modes to satisfy a wide range of test requirements. For example, the CC and CR modes can ensure that the UUT voltage outputs remain stable when the load varies. For battery chargers or charging stations, CV mode can change the output voltage to ensure the charging current is precise. When the UUT is a battery, the electronic load changes to simulate device loading behavior. Many battery discharge applications and power consumption profiles can be simulated for analysis, making the CP mode the good choice for simulating electronic device loads.



DYNAMIC LOAD

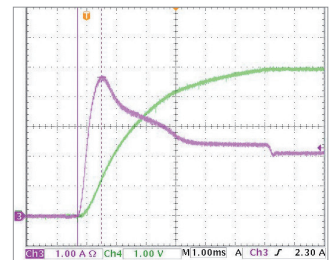
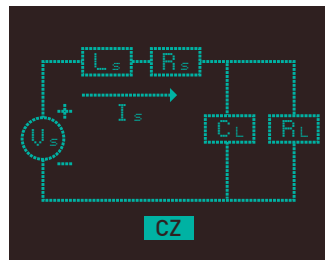
New designs of electronic devices operate at very high speeds and demand rapid transient response characteristics. To address these applications, the 63200E series offers high speed and programmable dynamic loading for testing. The figure shown below exhibits the programmable parameters such as current high/low level, T1/T2, rise/fall rate and execution times. As the load current continuously changes, the internal monitoring mechanism and line circuit can minimize the current waveform distortion with the dynamic change up to 2.5 kHz.

The dynamic mode provides a unique simulation capability allowing users to set the number of times each cycle repeats from 1~65535. This feature is suitable for peak current testing of fuses, on/off switches, coaxial cables, relays and batteries.



CZ MODE

A motherboard can contain many capacitors. To avoid charging the motherboard capacitors when the server powers on with surge current triggering the power supply over current protection mechanism making the power supply fail to turn on successfully, the power supply requires conducting a turn on capacitive load test. The 63200E series provides CZ mode for turn on capacitive load simulation to tackle this testing demand.

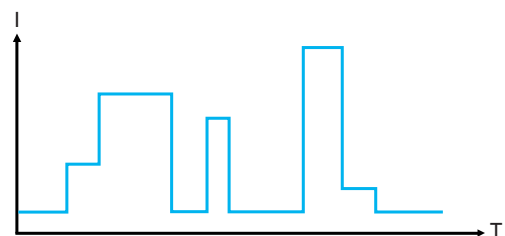


CZ mode is different from the CC and CP loading modes, as it simulates the actual inductance, impedance and capacitance for loading. Therefore, the load current is closer to the real situation. This is a voltage and current waveform simulation of the switching power supply in the turn on capacitive load test.

PROGRAMMABLE LOAD TIMING

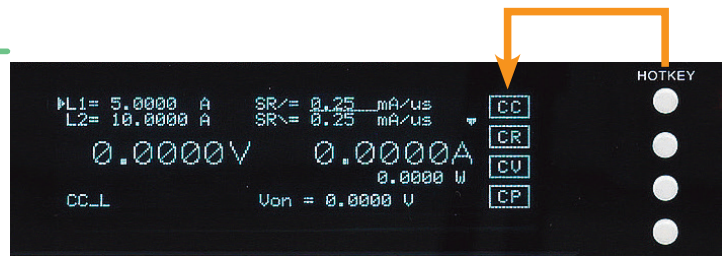
The 63200E series electronic load has 255 programmable timings built-in for various load condition simulations. Repeat loading can be done in a single sequence or all sequences. The minimum time of a sequence is 100ms and the resolution is 100ms. Following lists the applications for common programmed sequences.

1. Battery discharge (electric car, and electric locomotive, etc.)
simulating various dynamic load current waveforms, providing two levels above dynamic current simulation or one shot load simulation.
(For single channel output UUT)
2. Power supply mixed load modulation. (For multichannel output UUT)
3. Load simulation for fuel cell life cycle testing.



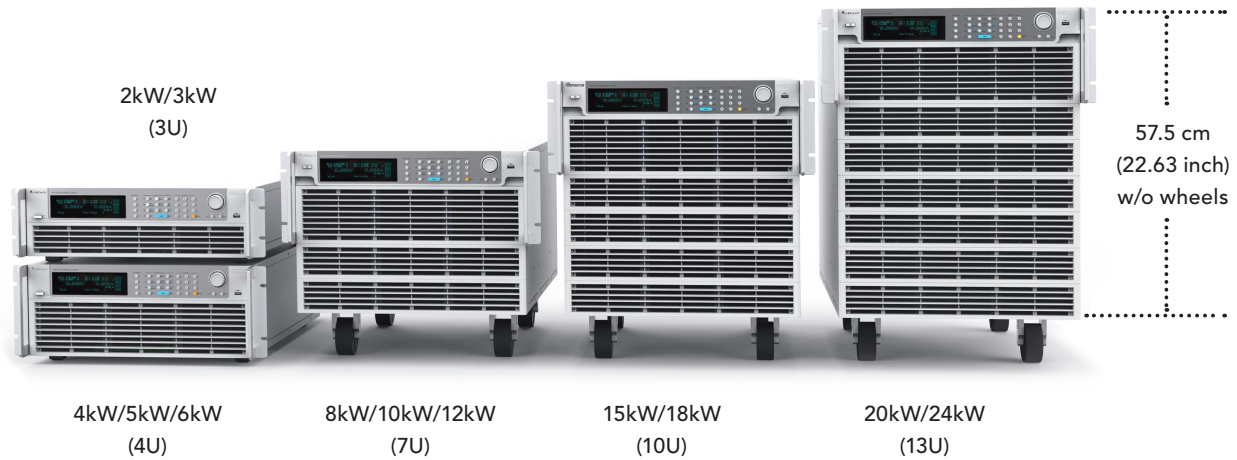
USER-DEFINED HOT KEY DESIGN

The 63200E provides 4 sets of user-defined hot keys that enable the user to enter the operation mode quickly. To change the hot key's definition, simply press it for 2 seconds.



ULTRA HIGH POWER DENSITY

The 63200E series have 36 models in total with 5 types of heights, 12 types of powers and 3 types of voltages. Its ultrahigh power density design upends the concept of oversize and difficult moving high power electronic loads. It saves plenty of room and solves space issues when upgrading the electronic load in an automated test system.

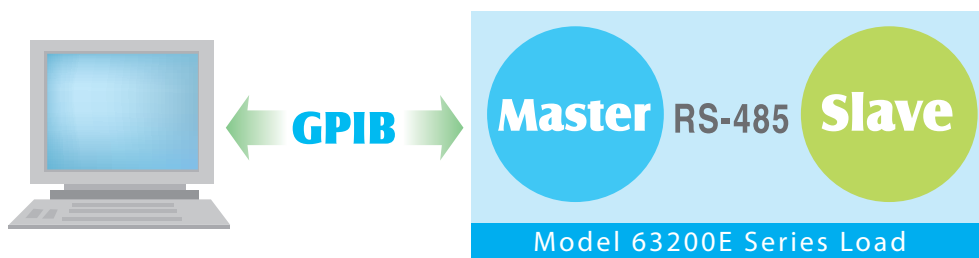


3 RANGES AND HIGH PRECISION MEASUREMENT

The 63200E series provides three operating current ranges and a built-in highly precision A/D converter, achieving 0.02%+0.02%F.S., 0.1%+0.1%F.S. and 0.1%+0.1%F.S. accuracy for voltage, current and power measurement respectively. Precise measurements like these are ideal for testing power efficiency and other critical parameters of the UUT.

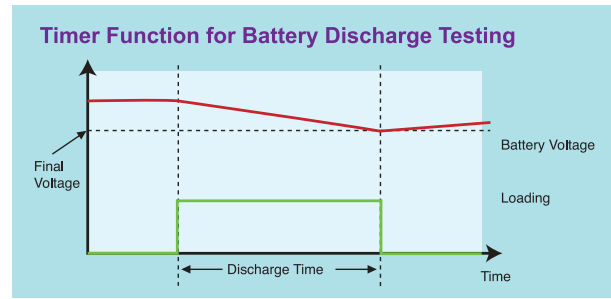
MASTER/SLAVE PARALLEL CONTROL

When increased power is required, two or more loads can be run in parallel to achieve the desired load current. The 63200E provides the user with smart Master/ Slave mode controls which enables the user to program the load currents of the Master and have them automatically calculated and downloaded to the slave loads. Using several loads in parallel to emulate a single load dramatically simplifies the operation. All models of the series can be integrated into a 19" width standard rack to save space. The slave models, 600V and 1200V, are without control panel and only can be controlled by master models. The 63200E can be controlled and reconfigured with automated testing applications via standard USB or optional Ethernet/LXI and GPIB interfaces.



BATTERY DISCHARGE TESTING

The 63200E has three discharge modes: CC, CR and CP. The electronic load can set cut off voltage and time (1~100,000 sec.) to stop loading correctly and make sure the battery is not damaged due to over discharge. In addition, it can measure the battery discharge power (WH, AH) and total discharge time. For example, when Load ON is pressed, the 63200E internal clock will start counting until the battery voltage is dropped to cut off voltage or Load OFF is pressed. The battery discharge test can also apply to super capacitor for discharge time testing.



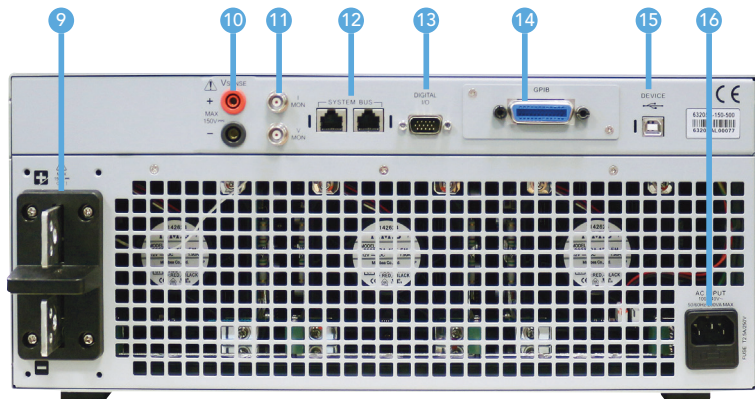
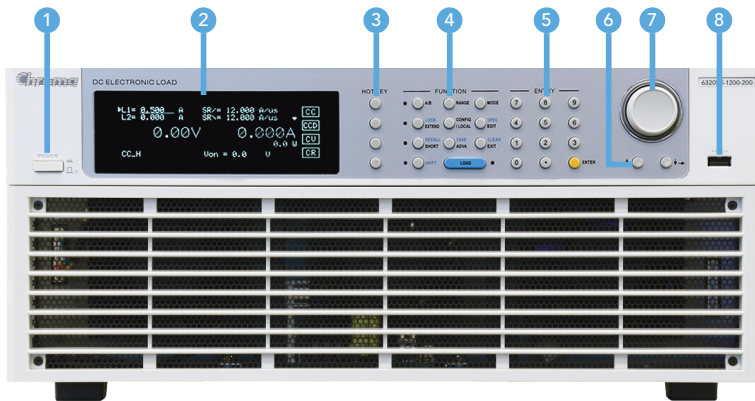
DC CHARGING STATIONS AND ON BOARD CHARGER TESTING

In the EV market, the DC charging station is an indispensable device. The 63200E series loads have models ranging from 2kW to 24kW and up to 2,000A operating voltage that are built to provide enough modes and functions for DC charging station functionality tests. Not only will these loads help R&D to perform functional tests and QA units to conduct verification tests, if integrated into an automated system, it will speed up production tests.

For on board charger testing, the 63200E can also be used to simulate the battery. When the on board charger starts charging the battery in current mode (CC), the 63200E can be set to voltage mode (CV) for loading. When the on board charger is performing floating charge on the batteries in voltage mode (CV), the 63200E has to change to current mode (CC) mode for loading.



PANEL DESCRIPTION



1. **Power Switch** : Electronic load AC power switch
2. **OLED(Organic Light-Emitting Diode)*** : Setup information display
3. **Setup information display** : Loading mode switch
4. **Function Keys** : Including A/B key, RANGE, MODE, EXTEND, LOCK, COFIG./LOCAL, EDIT, SPEC, SHORT, RECALL, ADVA, SAVE & CLEAR
5. **ENTRY Keys** : Numerical keys and ENTER key
6. **Arrow Keys** : Changing and selecting menu
7. **Changing and selecting menu** : Editing parameter setup page, push the knob again to confirm the input value when the setting is done
8. **USB HOST** : For user defined waveform and programmed sequencedata download as well as firmware upgrade (Available soon)
9. **Load Positive/Negative Terminal**
10. **Remote Sense Connections**
11. **Analog Outputs** : Proportional voltage and current waveforms
12. **System BUS** : For master/slave system data transmission
13. **System I/O** : For system input/output signal control
14. **GPIB & Ethernet Card Slot**
15. **USB Port**
16. **AC Input Connector**

Note*: Organic Light-Emitting Diode(OLED) Display will replace Vacuum Fluorescent Display(VFD) in Q3/2023, please contact Chroma for details.

SPECIFICATIONS-1 (150V)

150V Models	63202E-150-200			63203E-150-300			63204E-150-400		
Voltage*2	0~150V			0~150V			0~150V		
Current	0~20A	0~100A	0~200A	0~30A	0~150A	0~300A	0~40A	0~200A	0~400A
Power*3	0~2,000W			0~3,000W			0~4,000W		
Static Mode									
Min. Operating Voltage (DC)*11	1.8V@200A			1.8V@300A			1.8V@400A		
Constant Current Mode									
Range	0~20A	0~100A	0~200A	0~30A	0~150A	0~300A	0~40A	0~200A	0~400A
Accuracy*4	0.1%+0.1%F.S.			0.1%+0.1%F.S.			0.1%+0.1%F.S.		
Constant Resistance Mode									
Range	0.015Ω-150Ω (16V/2kW) 0.06Ω-600Ω (80V/2kW) 1.5Ω-3000Ω (150V/2kW)			0.01Ω-100Ω (16V/3kW) 0.04Ω-400Ω (80V/3kW) 1Ω-2000Ω (150V/3kW)			0.0075Ω-75Ω (16V/4kW) 0.03Ω-300Ω (80V/4kW) 0.75Ω-1500Ω (150V/4kW)		
Accuracy	Vin/Rset*(0.2%)+0.2% I.F.S.			Vin/Rset*(0.2%)+0.2% I.F.S.			Vin/Rset*(0.2%)+0.2% I.F.S.		
Constant Voltage Mode									
Range	0~16V	0~80V	0~150V	0~16V	0~80V	0~150V	0~16V	0~80V	0~150V
Accuracy	0.05%+0.025%F.S.			0.05%+0.025%F.S.			0.05%+0.025%F.S.		
Constant Power Mode									
Range	0~200W	0~1,000W	0~2,000W	0~300W	0~1,500W	0~3,000W	0~400W	0~2,000W	0~4,000W
Accuracy *5	0.2%+0.2%F.S.			0.2%+0.2%F.S.			0.2%+0.2%F.S.		
Dynamic Mode									
Slew rate	0.2mA/ μs~ 0.2A/μs	1mA/μs~ 1A/μs	2mA/μs~ 2A/μs	0.2mA/μs~ 0.3A/μs	1mA/μs~ 1.5A/μs	2mA/μs~ 3A/μs	0.4mA/μs~ 0.4A/μs	2mA/μs~ 2A/μs	4mA/μs~ 4A/μs
Resolution	0.2mA/μs	1mA/μs	2mA/μs	0.2mA/μs	1mA/μs	2mA/μs	0.4mA/μs	2mA/μs	4mA/μs
Accuracy	5% ± 10μs			5% ± 10μs			5% ± 10μs		
Others									
Power Consumption	160VA(max)			160VA(max)			200VA(max)		
Dimension (HxWxD)	132.5 x 428 x 647mm / 5.22 x 16.85 x 25.47 inch			132.5 x 428 x 647mm / 5.22 x 16.85 x 25.47 inch			177 x 428 x 647 mm / 6.97 x 16.85 x 25.47 inch		

SPECIFICATIONS-2 (150V)

150V Models	63205E-150-500			63206E-150-600			63208E-150-800		
Voltage*2	0~150V			0~150V			0~150V		
Current	0~50A	0~250A	0~500A	0~60A	0~300A	0~600A	0~80A	0~400A	0~800A
Power*3	0~5,000W			0~6,000W			0~8,000W		
Static Mode									
Min. Operating Voltage (DC)*11	1.8V@500A			1.8V@600A			1.8V@800A		
Constant Current Mode									
Range	0~50A	0~250A	0~500A	0~60A	0~300A	0~600A	0~80A	0~400A	0~800A
Accuracy*4	0.1%+0.1%F.S.			0.1%+0.1%F.S.			0.1%+0.1%F.S.		
Constant Resistance Mode									
Range	0.005Ω~50Ω (16V/5kW) 0.02Ω~200Ω (80V/5kW) 0.5Ω~1,000Ω (150V/5kW)			0.005Ω~50Ω (16V/6kW) 0.02Ω~200Ω (80V/6kW) 0.5Ω~1,000Ω (150V/6kW)			0.0038Ω~37.5Ω (16V/8kW) 0.015Ω~150Ω (80V/8kW) 0.375Ω~750Ω (150V/8kW)		
Accuracy	Vin/Rset*(0.2%)+0.2% I.F.S.			Vin/Rset*(0.2%)+0.2% I.F.S.			Vin/Rset*(0.2%)+0.2% I.F.S.		
Constant Voltage Mode									
Range	0~16V	0~80V	0~150V	0~16V	0~80V	0~150V	0~16V	0~80V	0~150V
Accuracy	0.05%+0.025%F.S.			0.05%+0.025%F.S.			0.05%+0.025%F.S.		
Constant Power Mode									
Range	0~500W	0~2,500W	0~5,000W	0~600W	0~3,000W	0~6,000W	0~800W	0~4,000W	0~8,000W
Accuracy *5	0.2%+0.2%F.S.			0.2%+0.2%F.S.			0.2%+0.2%F.S.		
Dynamic Mode									
Slew rate	0.5mA/ μs~ 0.5A/μs	2mA/μs~ 2.5A/μs	5mA/μs~ 5A/μs	0.5mA/μs~ 0.6A/μs	2mA/μs~ 3A/μs	5mA/μs~ 6A/μs	1mA/μs~ 0.8A/μs	5mA/μs~ 4A/μs	10mA/μs~ 8A/μs
Resolution	0.5mA/μs	2mA/μs	5mA/μs	0.5mA/μs	2mA/μs	5mA/μs	1mA/μs	5mA/μs	10mA/μs
Accuracy	5% ± 10μs			5% ± 10μs			5% ± 10μs		
Others									
Power Consumption	200VA(max)			200VA(max)			400VA(max)		
Dimension (HxWxD)	177 x 428 x 647mm / 6.97 x 16.85 x 25.47 inch			177 x 428 x 647mm / 6.97 x 16.85 x 25.47 inch			307.6 x 428 x 670.5 mm / 12.11 x 16.85 x 26.40 inch		

SPECIFICATIONS-3 (150V)

150V Models	63210E-150-1000			63212E-150-1200			63215E-150-1500		
Voltage*2	0~150V			0~150V			0~150V		
Current	0~100A	0~500A	0~1,000A	0~120A	0~600A	0~1,200A	0~150A	0~750A	0~1,500A
Power*3	0~10,000W			0~12,000W			0~15,000W		
Static Mode									
Min. Operating Voltage (DC)*11	1.8V@1,000A			1.8V@1,200A			1.8V@1,500A		
Constant Current Mode									
Range	0~100A	0~500A	0~1,000A	0~120A	0~600A	0~1,200A	0~150A	0~750A	0~1,500A
Accuracy*4	0.1%+0.1%F.S.			0.1%+0.1%F.S.			0.1%+0.1%F.S.		
Constant Resistance Mode									
Range	0.0025Ω~25Ω (16V/10kW) 0.01Ω~100Ω (80V/10kW) 0.25Ω~500Ω (150V/10kW)			0.0025Ω~25Ω (16V/12kW) 0.01Ω~100Ω (80V/12kW) 0.25Ω~500Ω (150V/12kW)			0.0017Ω~16.6667Ω (16V/15kW) 0.0067Ω~66.6667Ω (80V/15kW) 0.167Ω~333.334Ω (150V/15kW)		
Accuracy	Vin/Rset*(0.2%)+0.2% I.F.S.			Vin/Rset*(0.2%)+0.2% I.F.S.			Vin/Rset*(0.2%)+0.2% I.F.S.		
Constant Voltage Mode									
Range	0~16V	0~80V	0~150V	0~16V	0~80V	0~150V	0~16V	0~80V	0~150V
Accuracy	0.05%+0.025%F.S.			0.05%+0.025%F.S.			0.05%+0.025%F.S.		
Constant Power Mode									
Range	0~1,000W	0~5,000W		0~1,200W	0~6,000W	0~12,000W	0~1,500W	0~7,500W	0~15,000W
Accuracy *5	0.2%+0.2%F.S.			0.2%+0.2%F.S.			0.2%+0.2%F.S.		
Dynamic Mode									
Slew rate	1mA/μs~ 1A/μs	5mA/μs~ 5A/μs	10mA/μs~ 10A/μs	1mA/μs~ 1.2A/μs	5mA/μs~ 6A/μs	10mA/μs~ 12A/μs	2mA/μs~ 1.5A/μs	10mA/μs~ 7.5A/μs	20mA/μs~ 15A/μs
Resolution	1mA/μs	5mA/μs	10mA/μs	1mA/μs	5mA/μs	10mA/μs	2mA/μs	10mA/μs	20mA/μs
Accuracy	5% ± 10μs			5% ± 10μs			5% ± 10μs		
Others									
Power Consumption	400VA(max)			400VA(max)			600VA(max)		
Dimension (HxWxD)	307.6 x 428 x 670.5 mm / 12.11 x 16.85 x 26.40 inch			307.6 x 428 x 670.5 mm / 12.11 x 16.85 x 26.40 inch			441.1 x 428 x 670.5 mm / 17.37 x 16.85 x 26.40 inch		
Weight	70kg / 154.3 lbs			70kg / 154.3 lbs			97kg / 213.8 lbs		

SPECIFICATIONS-4 (150V)

150V Models	63218E-150-1800			63220E-150-2000			63224E-150-2000		
Voltage*2	0~150V			0~150V			0~150V		
Current	0~180A	0~900A	0~1,800A	0~200A	0~1,000A	0~2,000A	0~200A	0~1,000A	0~2,000A
Power*3	0~18,000W			0~20,000W			0~24,000W		
Static Mode									
Min. Operating Voltage (DC)*11	1.8V@1,800A			1.8V@2,000A			1.8V@2,000A		
Constant Current Mode									
Range	0~180A	0~900A	0~1,800A	0~200A	0~1,000A	0~2,000A	0~200A	0~1,000A	0~2,000A
Accuracy*4	0.1%+0.1%F.S.			0.1%+0.1%F.S.			0.1%+0.1%F.S.		
Constant Resistance Mode									
Range	0.0017Ω-16.6667Ω (16V/18kW) 0.0067Ω-66.6667Ω (80V/18kW) 0.167Ω-333.334Ω (150V/18kW)			0.0013Ω-12.5Ω (16V/20kW) 0.005Ω-50Ω (80V/20kW) 0.125Ω-250Ω (150V/20kW)			0.0013Ω-12.5Ω (16V/24kW) 0.005Ω-50Ω (80V/24kW) 0.125Ω-250Ω (150V/24kW)		
Accuracy	Vin/Rset*(0.2%)+0.2% I.F.S.			Vin/Rset*(0.2%)+0.2% I.F.S.			Vin/Rset*(0.2%)+0.2% I.F.S.		
Constant Voltage Mode									
Range	0~16V	0~80V	0~150V	0~16V	0~80V	0~150V	0~16V	0~80V	0~150V
Accuracy	0.05%+0.025%F.S.			0.05%+0.025%F.S.			0.05%+0.025%F.S.		
Constant Power Mode									
Range		0~9,000W	0~18,000W	0~2,000W	0~10,000W	0~20,000W	0~2,400W	0~12,000W	0~24,000W
Accuracy *5	0.2%+0.2%F.S.			0.2%+0.2%F.S.			0.2%+0.2%F.S.		
Dynamic Mode									
Slew rate	2mA/μs~ 1.8A/μs	10mA/μs~ 9A/μs	20mA/μs~ 18A/μs	2mA/μs~ 2A/μs	10mA/μs~ 10A/μs	20mA/μs~ 20A/μs	2mA/μs~ 2A/μs	10mA/μs~ 10A/μs	20mA/μs~ 20A/μs
Resolution	2mA/μs	10mA/μs	20mA/μs	2mA/μs	10mA/μs	20mA/μs	2mA/μs	10mA/μs	20mA/μs
Accuracy	5% ± 10μs			5% ± 10μs			5% ± 10μs		
Others									
Power Consumption	600VA(max)			800VA(max)			800VA(max)		
Dimension (HxWxD)	441.1 x 428 x 670.5 mm / 17.37 x 16.85 x 26.40 inch			574.6 x 428 x 670.5 mm / 22.64 x 16.85 x 26.40 inch			574.6 x 428 x 670.5 mm / 22.64 x 16.85 x 26.40 inch		
Weight	97kg / 213.8 lbs			125kg / 275.6 lbs			125kg / 275.6 lbs		

• Continued on next page →

SPECIFICATIONS-5 (600V)

600V Models	63202E-600-140			63203E-600-210			63204E-600-280		
Voltage*2	0~600V			0~600V			0~600V		
Current	0~14A	0~70A	0~140A	0~21A	0~105A	0~210A	0~28A	0~140A	0~280A
Power*3	0~2,000W			0~3,000W			0~4,000W		
Static Mode									
Min. Operating Voltage (DC)	14V@140A			14V@210A			14V@280A		
Constant Current Mode									
Range	0~14A	0~70A	0~140A	0~21A	0~105A	0~210A	0~28A	0~140A	0~280A
Accuracy*4	0.1%+0.1%F.S.			0.1%+0.1%F.S.			0.1%+0.1%F.S.		
Constant Resistance Mode									
Range	0.15Ω~1,500Ω (80V/2kW) 0.6Ω~6,000Ω (150V/2kW) 6Ω~12,000Ω (600V/2kW)			0.1Ω~1,000Ω (80V/3kW) 0.4Ω~4,000Ω (150V/3kW) 4Ω~8,000Ω (600V/3kW)			0.075Ω~750Ω (80V/4kW) 0.3Ω~3,000Ω (150V/4kW) 3Ω~6,000Ω (600V/4kW)		
Accuracy	Vin/Rset*(0.2%)+0.2% I.F.S.			Vin/Rset*(0.2%)+0.2% I.F.S.			Vin/Rset*(0.2%)+0.2% I.F.S.		
Constant Voltage Mode									
Range	0~80V	0~150V	0~600V	0~80V	0~150V	0~600V	0~80V	0~150V	0~600V
Accuracy	0.05%+0.025%F.S.			0.05%+0.025%F.S.			0.05%+0.025%F.S.		
Constant Power Mode									
Range	0~200W	0~1,000W	0~2,000W	0~300W	0~1,500W	0~3,000W	0~400W	0~2,000W	0~4,000W
Accuracy *5	0.2%+0.2%F.S.			0.2%+0.2%F.S.			0.2%+0.2%F.S.		
Dynamic Mode									
Slew rate	0.2mA/μs~ 0.14A/μs	1mA/μs~ 0.7A/μs	2mA/μs~ 1.4A/μs	0.2mA/μs~ 0.21A/μs	1mA/μs~ 1.05A/μs	2mA/μs~ 2.1A/μs	0.4mA/μs~ 0.28A/μs	2mA/μs~ 1.4A/μs	4mA/μs~ 2.8A/μs
Resolution	0.2mA/μs	1mA/μs	2mA/μs	0.2mA/μs	1mA/μs	2mA/μs	0.4mA/μs	2mA/μs	4mA/μs
Accuracy	5% ± 10μs			5% ± 10μs			5% ± 10μs		
Others									
Power Consumption	160VA(max)			160VA(max)			200VA(max)		
Dimension (HxWxD)	132.5 x 428 x 647mm / 5.22 x 16.85 x 25.47 inch			132.5 x 428 x 647mm / 5.22 x 16.85 x 25.47 inch			177 x 428 x 647 mm / 6.97 x 16.85 x 25.47 inch		
Weight	30kg / 66 lbs			30kg / 66 lbs			35kg / 77.2 lbs		

SPECIFICATIONS-6 (600V)

600V Models	63205E-600-350			63206E-600-420			63208E-600-560		
Voltage*2	0~600V			0~600V			0~600V		
Current	0~35A	0~175A	0~350A	0~42A	0~210A	0~420A	0~56A	0~280A	0~560A
Power*3	0~5,000W			0~6,000W			0~8,000W		
Static Mode									
Min. Operating Voltage (DC)	14V@350A			14V@420A			14V@560A		
Constant Current Mode									
Range	0~35A	0~175A	0~350A	0~42A	0~210A	0~420A	0~56A	0~280A	0~560A
Accuracy*4	0.1%+0.1%F.S.			0.1%+0.1%F.S.			0.1%+0.1%F.S.		
Constant Resistance Mode									
Range	0.05Ω~500Ω (80V/5kW) 0.2Ω~2,000Ω (150V/5kW) 2Ω~4,000Ω (600V/5kW)			0.05Ω~500Ω (80V/6kW) 0.2Ω~2,000Ω (150V/6kW) 2Ω~4,000Ω (600V/6kW)			0.038Ω~375Ω (80V/8kW) 0.15Ω~1,500Ω (150V/8kW) 1.5Ω~3,000Ω (600V/8kW)		
Accuracy	Vin/Rset*(0.2%)+0.2% I.F.S.			Vin/Rset*(0.2%)+0.2% I.F.S.			Vin/Rset*(0.2%)+0.2% I.F.S.		
Constant Voltage Mode									
Range	0~80V	0~150V	0~600V	0~80V	0~150V	0~600V	0~80V	0~150V	0~600V
Accuracy	0.05%+0.025%F.S.			0.05%+0.025%F.S.			0.05%+0.025%F.S.		
Constant Power Mode									
Range	0~500W	0~2,500W	0~5,000W	0~600W	0~3,000W	0~6,000W	0~800W	0~4,000W	0~8,000W
Accuracy *5	0.2%+0.2%F.S.			0.2%+0.2%F.S.			0.2%+0.2%F.S.		
Dynamic Mode									
Slew rate	0.4mA/μs~ 0.35A/μs	2mA/μs~ 1.75A/μs	4mA/μs~ 3.5A/μs	0.4mA/μs~ 0.42A/μs	2mA/μs~ 2.1A/μs	4mA/μs~ 4.2A/μs	0.5mA/μs~ 0.56A/μs	2mA/μs~ 2.8A/μs	5mA/μs~ 5.6A/μs
Resolution	0.4mA/μs	2mA/μs	4mA/μs	0.4mA/μs	2mA/μs	4mA/μs	0.5mA/μs	2mA/μs	5mA/μs
Accuracy	5% ± 10μs			5% ± 10μs			5% ± 10μs		
Others									
Power Consumption	200VA(max)			200VA(max)			400VA(max)		
Dimension (HxWxD)	177 x 428 x 647mm / 6.97 x 16.85 x 25.47 inch			177 x 428 x 647mm / 6.97 x 16.85 x 25.47 inch			307.6 x 428 x 670.5 mm / 12.11 x 16.85 x 26.40 inch		
Weight	35kg / 77.2 lbs			35kg / 77.2 lbs			70kg / 154.3 lbs		

• Continued on next page →

SPECIFICATIONS-7 (600V)

600V Models	63210E-600-700			63212E-600-840			63215E-600-1050		
Voltage*2	0~600V			0~600V			0~600V		
Current	0~70A	0~350A	0~700A	0~84A	0~420A	0~840A	0~105A	0~525A	0~1,050A
Power*3	0~10,000W			0~12,000W			0~15,000W		
Static Mode									
Min. Operating Voltage (DC)	14V@700A			14V@840A			14V@1,050A		
Constant Current Mode									
Range	0~70A	0~350A	0~700A	0~84A	0~420A	0~840A	0~105A	0~525A	0~1,050A
Accuracy*4	0.1%+0.1%F.S.			0.1%+0.1%F.S.			0.1%+0.1%F.S.		
Constant Resistance Mode									
Range	0.025Ω~250Ω (80V/10kW) 0.1Ω~1,000Ω (150V/10kW) 1Ω~2,000Ω (600V/10kW)			0.025Ω~250Ω (80V/12kW) 0.1Ω~1,000Ω (150V/12kW) 1Ω~2,000Ω (600V/12kW)			0.017Ω~166.667Ω (80V/15kW) 0.067Ω~666.667Ω (150V/15kW) 0.67Ω~1,333.34Ω (600V/15kW)		
Accuracy	Vin/Rset*(0.2%)+0.2% I.F.S.			Vin/Rset*(0.2%)+0.2% I.F.S.			Vin/Rset*(0.2%)+0.2% I.F.S.		
Constant Voltage Mode									
Range	0~80V	0~150V	0~600V	0~80V	0~150V	0~600V	0~80V	0~150V	0~600V
Accuracy	0.05%+0.025%F.S.			0.05%+0.025%F.S.			0.05%+0.025%F.S.		
Constant Power Mode									
Range	0~1,000W	0~5,000W	0~10,000W	0~1,200W	0~6,000W	0~12,000W	0~1,500W	0~7,500W	0~15,000W
Accuracy *5	0.2%+0.2%F.S.			0.2%+0.2%F.S.			0.2%+0.2%F.S.		
Dynamic Mode									
Slew rate	0.5mA/μs~ 0.7A/μs	2.5mA/μs~ 3.5A/μs	5mA/μs~ 7A/μs	1mA/μs~ 0.84A/μs	5mA/μs~ 4.2A/μs	10mA/μs~ 8.4A/μs	1mA/μs~ 1.05A/μs	5mA/μs~ 5.25A/μs	10mA/μs~ 10.5A/μs
Resolution	0.5mA/μs	2.5mA/μs	5mA/μs	1mA/μs	5mA/μs	10mA/μs	1mA/μs	5mA/μs	10mA/μs
Accuracy	5% ± 10μs			5% ± 10μs			5% ± 10μs		
Others									
Power Consumption	400VA(max)			400VA(max)			600VA(max)		
Dimension (HxWxD)	307.6 x 428 x 670.5 mm / 12.11 x 16.85 x 26.40 inch			307.6 x 428 x 670.5 mm / 12.11 x 16.85 x 26.40 inch			441.1 x 428 x 670.5 mm / 17.37 x 16.85 x 26.40 inch		
Weight	70kg / 154.3 lbs			70kg / 154.3 lbs			97kg / 213.8 lbs		

SPECIFICATIONS-8 (600V)

600V Models	63218E-600-1260			63220E-600-1400			63224E-600-1680		
Voltage*2	0~600V			0~600V			0~600V		
Current	0~126A	0~630A	0~1,260A	0~140A	0~700A	0~1,400A	0~168A	0~840A	0~1,680A
Power*3	0~18,000W			0~20,000W			0~24,000W		
Static Mode									
Min. Operating Voltage (DC)	14V@1,260A			14V@1,400A			14V@1,680A		
Constant Current Mode									
Range	0~126A	0~630A	0~1,260A	0~140A	0~700A	0~1,400A	0~168A	0~840A	0~1,680A
Accuracy*4	0.1%+0.1%F.S.			0.1%+0.1%F.S.			0.1%+0.1%F.S.		
Constant Resistance Mode									
Range	0.017Ω-166.667Ω (80V/18kW) 0.067Ω-666.667Ω (150V/18kW) 0.67Ω-1,333.34Ω (600V/18kW)			0.013Ω-125Ω (80V/20kW) 0.05Ω-500Ω (150V/20kW) 0.5Ω-1,000Ω (600V/20kW)			0.013Ω-125Ω (80V/24kW) 0.05Ω-500Ω (150V/24kW) 0.5Ω-1,000Ω (600V/24kW)		
Accuracy	Vin/Rset*(0.2%)+0.2% I.F.S.			Vin/Rset*(0.2%)+0.2% I.F.S.			Vin/Rset*(0.2%)+0.2% I.F.S.		
Constant Voltage Mode									
Range	0~80V	0~150V	0~600V	0~80V	0~150V	0~600V	0~80V	0~150V	0~600V
Accuracy	0.05%+0.025%F.S.			0.05%+0.025%F.S.			0.05%+0.025%F.S.		
Constant Power Mode									
Range	0~1,800W	0~9,000W	0~18,000W	0~2,000W	0~10,000W	0~20,000W	0~2,400W	0~12,000W	0~24,000W
Accuracy *5	0.2%+0.2%F.S.			0.2%+0.2%F.S.			0.2%+0.2%F.S.		
Dynamic Mode									
Slew rate	1mA/μs~ 1.26A/μs	5mA/μs~ 6.3A/μs	10mA/μs~ 12.6A/μs	2mA/μs~ 1.4A/μs	10mA/μs~ 7A/μs	20mA/μs~ 14A/μs	2mA/μs~ 1.68A/μs	10mA/μs~ 8.4A/μs	20mA/μs~ 16.8A/μs
Resolution	1mA/μs	5mA/μs	10mA/μs	2mA/μs	10mA/μs	20mA/μs	2mA/μs	10mA/μs	20mA/μs
Accuracy	5% ± 10μs			5% ± 10μs			5% ± 10μs		
Others									
Power Consumption	600VA(max)			800VA(max)			800VA(max)		
Dimension (HxWxD)	441.1 x 428 x 670.5 mm / 17.37 x 16.85 x 26.40 inch			574.6 x 428 x 670.5 mm / 22.64 x 16.85 x 26.40 inch			574.6 x 428 x 670.5 mm / 22.64 x 16.85 x 26.40 inch		
Weight	97kg / 213.8 lbs			125kg / 275.6 lbs			125kg / 275.6 lbs		

• Continued on next page →

SPECIFICATIONS-9 (1,200V)

1,200V Models	63202E-1200-80			63203E-1200-120			63204E-1200-160		
Voltage*2	0~1,200V			0~1,200V			0~1,200V		
Current	0~8A	0~40A	0~80A	0~12A	0~60A	0~120A	0~16A	0~80A	0~160A
Power*3 *10	0~2,000W			0~3,000W			0~4,000W		
Static Mode									
Min. Operating Voltage (DC)	20V@80A			20V@120A			20V@160A		
Constant Current Mode									
Range	0~8A	0~40A	0~80A	0~12A	0~60A	0~120A	0~16A	0~80A	0~160A
Accuracy*4	0.1%+0.1%F.S.			0.1%+0.1%F.S.			0.1%+0.1%F.S.		
Constant Resistance Mode									
Range	0.3Ω-3kΩ (150V/2kW) 1.2Ω-12kΩ (600V/2kW) 30Ω-60kΩ (1,200V/2kW)			0.2Ω-2kΩ (150V/3kW) 0.8Ω-8kΩ (600V/3kW) 20Ω-40kΩ (1,200V/3kW)			0.15Ω-1.5kΩ (150V/4kW) 0.6Ω-6kΩ (600V/4kW) 15Ω-30kΩ (1,200V/4kW)		
Accuracy	Vin/Rset*(0.2%)+0.2% I.F.S.			Vin/Rset*(0.2%)+0.2% I.F.S.			Vin/Rset*(0.2%)+0.2% I.F.S.		
Constant Voltage Mode									
Range	0~150V	0~600V	0~1,200V	0~150V	0~600V	0~1,200V	0~150V	0~600V	0~1,200V
Accuracy	0.05%+0.025%F.S.			0.05%+0.025%F.S.			0.05%+0.025%F.S.		
Constant Power Mode									
Range	0~200W	0~1,000W	0~2,000W	0~300W	0~1,500W	0~3,000W	0~400W	0~2,000W	0~4,000W
Accuracy *5	0.2%+0.2%F.S.			0.2%+0.2%F.S.			0.2%+0.2%F.S.		
Dynamic Mode									
Slew rate	0.1mA/μs~ 0.08A/μs	0.5mA/μs~ 0.4A/μs	1mA/μs~ 0.8A/μs	0.1mA/μs~ 0.12A/μs	0.5mA/μs~ 0.6A/μs	1mA/μs~ 1.2A/μs	0.2mA/μs~ 0.16A/μs	1mA/μs~ 0.8A/μs	2mA/μs~ 1.6A/μs
Resolution	0.1mA/μs	0.5mA/μs	1mA/μs	0.1mA/μs	0.5mA/μs	1mA/μs	0.2mA/μs	1mA/μs	2mA/μs
Accuracy	5% ± 10μs			5% ± 10μs			5% ± 10μs		
Others									
Power Consumption	160VA(max)			160VA(max)			200VA(max)		
Dimension (HxWxD)	132.5 x 428 x 647mm / 5.22 x 16.85 x 25.47 inch			132.5 x 428 x 647mm / 5.22 x 16.85 x 25.47 inch			177 x 428 x 647mm / 6.97 x 16.85 x 25.47 inch		
Weight	30kg / 66 lbs			30kg / 66 lbs			35kg / 77.2 lbs		

SPECIFICATIONS-10 (1,200V)

1,200V Models	63205E-1200-200			63206E-1200-240			63208E-1200-320		
Voltage*2	0~1,200V			0~1,200V			0~1,200V		
Current	0~20A	0~100A	0~200A	0~24A	0~120A	0~240A	0~32A	0~160A	0~320A
Power*3 *10	0~5,000W			0~6,000W			0~8,000W		
Static Mode									
Min. Operating Voltage (DC)	20V@200A			20V@240A			20V@320A		
Constant Current Mode									
Range	0~20A	0~100A	0~200A	0~24A	0~120A	0~240A	0~32A	0~160A	0~320A
Accuracy*4	0.1%+0.1%F.S.			0.1%+0.1%F.S.			0.1%+0.1%F.S.		
Constant Resistance Mode									
Range	0.1Ω-1kΩ (150V/5kW) 0.4Ω-4kΩ (600V/5kW) 10Ω-20kΩ (1200V/5kW)			0.1Ω-1kΩ (150V/6kW) 0.4Ω-4kΩ (600V/6kW) 10Ω-20kΩ (1200V/6kW)			0.075Ω-0.75kΩ (150V/8kW) 0.3Ω-3kΩ (600V/8kW) 7.5Ω-15kΩ (1200V/8kW)		
Accuracy	Vin/Rset*(0.2%)+0.2% I.F.S.			Vin/Rset*(0.2%)+0.2% I.F.S.			Vin/Rset*(0.2%)+0.2% I.F.S.		
Constant Voltage Mode									
Range	0~150V	0~600V	0~1,200V	0~150V	0~600V	0~1,200V	0~150V	0~600V	0~1,200V
Accuracy	0.05%+0.025%F.S.			0.05%+0.025%F.S.			0.05%+0.025%F.S.		
Constant Power Mode									
Range	0~500W	0~2,500W	0~5,000W	0~600W	0~3,000W	0~6,000W	0~800W	0~4,000W	0~8,000W
Accuracy *5	0.2%+0.2%F.S.			0.2%+0.2%F.S.			0.2%+0.2%F.S.		
Dynamic Mode									
Slew rate	0.2mA/μs~ 0.2A/μs	1mA/μs~ 1A/μs	2mA/μs~ 2A/μs	0.2mA/μs~ 0.24A/μs	1mA/μs~ 1.2A/μs	2mA/μs~ 2.4A/μs	0.4mA/μs~ 0.32A/μs	2mA/μs~ 1.6A/μs	4mA/μs~ 3.2A/μs
Resolution	0.2mA/μs	1mA/μs	2mA/μs	0.2mA/μs	1mA/μs	2mA/μs	0.4mA/μs	2mA/μs	4mA/μs
Accuracy	5% ± 10μs			5% ± 10μs			5% ± 10μs		
Others									
Power Consumption	200VA(max)			200VA(max)			400VA(max)		
Dimension (HxWxD)	177 x 428 x 647mm / 6.97 x 16.85 x 25.47 inch			177 x 428 x 647mm / 6.97 x 16.85 x 25.47 inch			307.6 x 428 x 670.5 mm / 12.11 x 16.85 x 26.40 inch		
Weight	35kg / 77.2 lbs			35kg / 77.2 lbs			70kg / 154.3 lbs		

• Continued on next page →

SPECIFICATIONS-11 (1,200V)

1,200V Models	63210E-1200-400			63212E-1200-480			63215E-1200-600		
Voltage*2	0~1,200V			0~1,200V			0~1,200V		
Current	0~40A	0~200A	0~400A	0~48A	0~240A	0~480A	0~60A	0~300A	0~600A
Power*3 *10	0~10,000W			0~12,000W			0~15,000W		
Static Mode									
Min. Operating Voltage (DC)	20V@400A			20V@480A			20V@600A		
Constant Current Mode									
Range	0~40A	0~200A	0~400A	0~48A	0~240A	0~480A	0~60A	0~300A	0~600A
Accuracy*4	0.1%+0.1%F.S.			0.1%+0.1%F.S.			0.1%+0.1%F.S.		
Constant Resistance Mode									
Range	0.05Ω~0.5kΩ(150V/10kW) 0.2Ω~2kΩ(600V/10kW) 5Ω~10kΩ(1,200V/10kW)			0.05Ω~0.5kΩ(150V/12kW) 0.2Ω~2kΩ(600V/12kW) 5Ω~10kΩ(1,200V/12kW)			0.034Ω~0.333334kΩ(150V/15kW) 0.14Ω~1.33334kΩ(600V/15kW) 3.34Ω~6.66667kΩ(1,200V/15kW)		
Accuracy	Vin/Rset*(0.2%)+0.2% I.F.S.			Vin/Rset*(0.2%)+0.2% I.F.S.			Vin/Rset*(0.2%)+0.2% I.F.S.		
Constant Voltage Mode									
Range	0~150V	0~600V	0~1,200V	0~150V	0~600V	0~1,200V	0~150V	0~600V	0~1,200V
Accuracy	0.05%+0.025%F.S.			0.05%+0.025%F.S.			0.05%+0.025%F.S.		
Constant Power Mode									
Range	0~1,000W	0~5,000W	0~10,000W	0~1,200W	0~6,000W	0~12,000W	0~1,500W	0~7,500W	0~15,000W
Accuracy *5	0.2%+0.2%F.S.			0.2%+0.2%F.S.			0.2%+0.2%F.S.		
Dynamic Mode									
Slew rate	0.4mA/μs~ 0.4A/μs	2mA/μs~ 2A/μs	4mA/μs~ 4A/μs	0.4mA/μs~ 0.48A/μs	2mA/μs~ 2.4A/μs	4mA/μs~ 4.8A/μs	0.5mA/μs~ 0.6A/μs	2mA/μs~ 3A/μs	5mA/μs~ 6A/μs
Resolution	0.4mA/μs	2mA/μs	4mA/μs	0.4mA/μs	2mA/μs	4mA/μs	0.5mA/μs	2mA/μs	5mA/μs
Accuracy	5% ± 10μs			5% ± 10μs			5% ± 10μs		
Others									
Power Consumption	400VA(max)			400VA(max)			600VA(max)		
Dimension (HxWxD)	307.6 x 428 x 670.5 mm / 12.11 x 16.85 x 26.40 inch			307.6 x 428 x 670.5 mm / 12.11 x 16.85 x 26.40 inch			441.1 x 428 x 670.5 mm / 17.37 x 16.85 x 26.40 inch		
Weight	70kg / 154.3 lbs			70kg / 154.3 lbs			97kg / 213.8 lbs		

SPECIFICATIONS-12 (1,200V)

1,200V Models	63218E-1200-720			63220E-1200-800			63224E-1200-960		
Voltage*2	0~1,200V			0~1,200V			0~1,200V		
Current	0~72A	0~360A	0~720A	0~80A	0~400A	0~800A	0~96A	0~480A	0~960A
Power*3 *10	0~18,000W			0~20,000W			0~24,000W		
Static Mode									
Min. Operating Voltage (DC)	20V@720A			20V@800A			20V@960A		
Constant Current Mode									
Range	0~72A	0~360A	0~720A	0~80A	0~400A	0~800A	0~96A	0~480A	0~960A
Accuracy*4	0.1%+0.1%F.S.			0.1%+0.1%F.S.			0.1%+0.1%F.S.		
Constant Resistance Mode									
Range	0.034Ω~0.333334kΩ(150V/18kW) 0.14Ω~1.33334kΩ(600V/18kW) 3.34Ω~6.66667kΩ(1,200V/18kW)			0.025Ω~0.25kΩ(150V/20kW) 0.1Ω~1kΩ(600V/20kW) 2.5Ω~5kΩ(1,200V/20kW)			0.025Ω~0.25kΩ(150V/24kW) 0.1Ω~1kΩ(600V/24kW) 2.5Ω~5kΩ(1,200V/24kW)		
Accuracy	Vin/Rset*(0.2%)+0.2% I.F.S.			Vin/Rset*(0.2%)+0.2% I.F.S.			Vin/Rset*(0.2%)+0.2% I.F.S.		
Constant Voltage Mode									
Range	0~150V	0~600V	0~1,200V	0~150V	0~600V	0~1,200V	0~150V	0~600V	0~1,200V
Accuracy	0.05%+0.025%F.S.			0.05%+0.025%F.S.			0.05%+0.025%F.S.		
Constant Power Mode									
Range	0~1,800W	0~9,000W	0~18,000W	0~2,000W	0~10,000W	0~20,000W	0~2,400W	0~12,000W	0~24,000W
Accuracy *5	0.2%+0.2%F.S.			0.2%+0.2%F.S.			0.2%+0.2%F.S.		
Dynamic Mode									
Slew rate	0.5mA/μs~ 0.72A/μs	2mA/μs~ 3.6A/μs	5mA/μs~ 7.2A/μs	1mA/μs~ 0.8A/μs	5mA/μs~ 4A/μs	10mA/μs~ 8A/μs	1mA/μs~ 0.96A/μs	5mA/μs~ 4.8A/μs	10mA/μs~ 9.6A/μs
Resolution	0.5mA/μs	2mA/μs	5mA/μs	1mA/μs	5mA/μs	10mA/μs	1mA/μs	5mA/μs	10mA/μs
Accuracy	5% ± 10μs			5% ± 10μs			5% ± 10μs		
Others									
Power Consumption	600VA(max)			800VA(max)			800VA(max)		
Dimension (HxWxD)	441.1 x 428 x 670.5 mm / 17.37 x 16.85 x 26.40 inch			574.6 x 428 x 670.5 mm / 22.64 x 16.85 x 26.40 inch			574.6 x 428 x 670.5 mm / 22.64 x 16.85 x 26.40 inch		
Weight	97kg / 213.8 lbs			125kg / 275.6 lbs			125kg / 275.6 lbs		

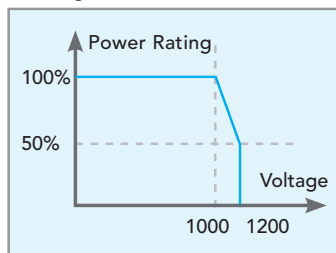
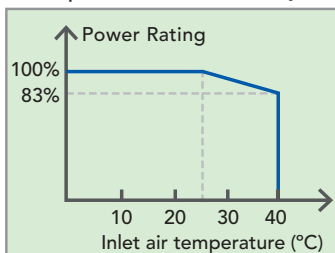
• Continued on next page →

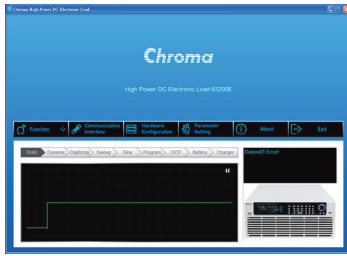
GENERAL SPECIFICATIONS

Voltage	150V	600V	1200V
Static mode			
CZ			
Range	CL : 30 μ F~50,000 μ F ; RL : as CR Ls : 0.1 μ H~16 μ H ; Rs : 30m Ω ~20 Ω		
Resolution	CL : 1 μ F ; Ls : 0.1 μ H Rs : 1m Ω ; RL : as CR		
Dynamic mode			
T1 & T2	0.2ms~99.999ms/100ms~99,999ms		
Resolution	1 μ s/1ms		
Accuracy	1 μ s+100ppm		
Min. rise time	100 μ s (Typical)*6	100 μ s (Typical)*7	100 μ s (Typical)*8
Measurement			
Voltage read back			
Range *9	0 ~ rated voltage (three ranges)		
Accuracy	0.02%+0.02%F.S.		
Current read back			
Range	0 ~ rated current (three ranges)		
Accuracy	0.1%+0.1%F.S.		
Power read back			
Range	0 ~ rated power (three ranges)		
Accuracy *5	0.1%+0.1%F.S.		
Battery Discharge			
Range	1s~100,000s		
Resolution	1s		
Monitor			
Voltage Monitor			
Bandwidth	20kHz		
Range	0~150V	0~600V	0~1200V
Output	0~10V		
Accuracy	0.5%F.S.		
Output impedance	10k Ω		
Resolution	4mV		
Current Monitor			
Bandwidth	20kHz		
Range	0 ~ rated current		
Output	0~10V		
Accuracy	0.5%F.S.		
Output impedance	10k Ω		
Resolution	4mV		
Protection			
Over Current	Yes (Settable)		
Over Power	Yes (Settable)		
Over Temperature	Yes		
Over Voltage Alarm	Yes		
Reverse Alarm	Yes		
Interface			
Ethernet / LXI	Optional		
Front USB (Host)	Standard		
Rear USB (Device)	Standard		
GPIO	Optional		
System Bus	Master/Slave		
General			
Input Resistance (Load Off)	800k Ω (Typical)	1M Ω (Typical)	2M Ω (Typical)
Operating Temp	0~40 $^{\circ}$ C		
Storage Temp	-20~80 $^{\circ}$ C		
Line Voltage	100~240 VAC / 47~63Hz		

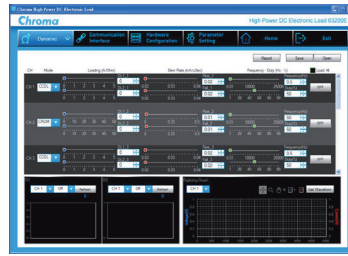
- The specifications are guaranteed to meet specified performance at temperature range of $25 \pm 5^{\circ}$ C.
- If the operating voltage exceeds the rated voltage for 1.05 times, it would cause permanent damage to the device.
- The power rating specifications at ambient temperature = 25° C and see the diagram below for power derating.
- If the operating current is below range 0.2%, the accuracy specification is 0.1% F.S.
- Power F.S. = Vrange F.S.x Irang F.S.
- The specification is valid only for loading current > 4% F.S.
- The specification is valid only for loading current > 3% F.S.
- The specification is valid only for loading current > 5% F.S.
- Example : 63204E-1200-160, the voltage ranges are 150V, 600V, and 1,200V.
- For the power rating specifications of 1200V model, see the diagram below for power derating.
- The minimum operating voltage Typical is 1.8V and maximum is 2.5V.

* All specifications are subject to change without notice.





Main menu



Dynamic load



Editing menu



Battery discharge

ORDERING INFORMATION


63200E Series Programmable DC Electronic Load				
Model	Voltage	Current	Power	Height
63202E-150-200	150V	200A	2kW	3U
63203E-150-300		300A	3kW	
63204E-150-400		400A	4kW	
63205E-150-500		500A	5kW	4U
63206E-150-600		600A	6kW	
63208E-150-800		800A	8kW	7U
63210E-150-1000		1000A	10kW	
63212E-150-1200		1200A	12kW	
63215E-150-1500		1500A	15kW	10U
63218E-150-1800		1800A	18kW	
63220E-150-2000		2000A	20kW	13U
63224E-150-2000		2000A	24kW	
63202E-600-140		600V	140A	2kW
63203E-600-210	210A		3kW	
63204E-600-280	280A		4kW	
63205E-600-350	350A		5kW	4U
63206E-600-420	420A		6kW	
63208E-600-560	560A		8kW	7U
63210E-600-700	700A		10kW	
63212E-600-840	840A		12kW	
63215E-600-1050	1050A		15kW	10U
63218E-600-1260	1260A		18kW	
63220E-600-1400	1400A		20kW	13U
63224E-600-1680	1680A		24kW	

* The 63200E series models with the same voltage but different power can be controlled in parallel simply through the master and slave settings. Once multiple units are integrated into the rack, be sure to pay special attention to ventilation. The 63200E series can parallel up to 10 units with maximum power 240kW, and if there is a demand for power higher than 240kW, please contact your local sales representative.

63200E Series Programmable DC Electronic Load				
Model	Voltage	Current	Power	Height
63202E-1200-80	1200V	80A	2kW	3U
63203E-1200-120		120A	3kW	
63204E-1200-160		160A	4kW	
63205E-1200-200		200A	5kW	4U
63206E-1200-240		240A	6kW	
63208E-1200-320		320A	8kW	7U
63210E-1200-400		400A	10kW	
63212E-1200-480		480A	12kW	
63215E-1200-600		600A	15kW	10U
63218E-1200-720		720A	18kW	
63220E-1200-800		800A	20kW	13U
63224E-1200-960		960A	24kW	

Options	
A600009	GPIB cable (200cm)
A600010	GPIB cable (60cm)
A632007	Over voltage protection box (for 1200V models only)
A632009	Slave model (600V/1680A/24kW)
A632010	Slave model (1200V/960A/24kW)
A632012	Softpanel for 63200E Series
A636000	GPIB interface
A636010	Ethernet interface
B632000	Handle for 3U models (2kW/3kW)
B632001	Handle for 4U models (4kW/5kW/6kW)
B632002	Handle for 7U models (8kW/10kW/12kW)
B632003	Handle for 10U models (15kW/18kW)
B632004	Handle for 13U models (20kW/24kW)

Get more product & global distributor information in Chroma ATE APP



iOS





Android

Search Keyword

63200E

HEADQUARTERS
CHROMA ATE INC.
88 Wenmao Rd.,
Guishan Dist.,
Taoyuan City
333001, Taiwan
T +886-3-327-9999
F +886-3-327-8898
www.chromaate.com
info@chromaate.com

U.S.A.
CHROMA SYSTEMS
SOLUTIONS, INC.
19772 Pauling,
Foothill Ranch,
CA 92610
T +1-949-600-6400
F +1-949-600-6401
www.chromausa.com
sales@chromausa.com

EUROPE
CHROMA ATE EUROPE B.V.
Morsestraat 32, 6716 AH
Ede, The Netherlands
T +31-318-648282
F +31-318-648288
www.chroma.eu.com
salesnl@chroma.eu.com

CHROMA GERMANY GMBH
Südtiroler Str. 9, 86165,
Augsburg, Germany
T +49-821-790967-0
F +49-821-790967-600
www.chroma.eu.com
salesde@chroma.eu.com

JAPAN
CHROMA JAPAN
CORP.
888 Nippa-cho,
Kouhoku-ku,
Yokohama-shi,
Kanagawa,
223-0057 Japan
T +81-45-542-1118
F +81-45-542-1080
www.chroma.co.jp
info@chroma.co.jp

KOREA
CHROMA ATE
KOREA BRANCH
312, Gold Tower,
8F, No.4, Nanyu Tian
14-2, Pangyo-yeok-ro
192, Bundang-gu,
Seongnam-si,
Gyeonggi-do,
13524, Korea
T +82-31-781-1025
F +82-31-8017-6614
www.chromaate.co.kr
info@chromaate.com

CHINA
CHROMA ELECTRONICS
(SHENZHEN) CO., LTD.
8F, No.4, Nanyu Tian
An Industrial Estate,
Shenzhen, China
T +86-755-2664-4598
www.chroma.com.cn
info@chromaate.com

SOUTHEAST ASIA
QUANTEL PTE LTD.
(A company of Chroma Group)
25 Kallang Avenue #05-02
Singapore 339416
T +65-6745-3200
F +65-6745-9764
www.quantel-global.com
sales@quantel-global.com